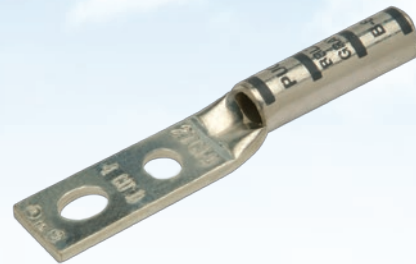


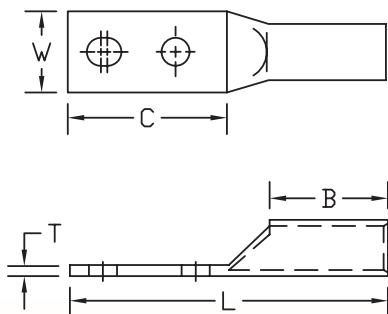
Long Barrel - Two Hole Slotted Tongue with Inspection Window

Type BBLZ-D-ST

- Manufactured from high conductivity seamless copper tubing
- Tin-plated to inhibit corrosion
- Beveled entry for easy cable insertion
- Inspection window to ensure full cable insertion
- **Slotted pad hole configuration accommodates range of hardware spacings and assures maximum secureness**
- Long barrel provides high pull out force and added secureness for improved mechanical and electrical properties
- Color coded barrels are marked with die index numbers
- Connectors are suitable for voltages up to 35 KV
- 45° and 90° angles are UL listed and CSA certified
- **Connectors are UL listed and CSA certified with Penn-Union, Burndy, T&B, Huskie, Greenlee and Versa-Crimp® style tooling**



Versa-Crimp® (as used throughout this publication) is a registered trademark of HUBBELL Power Systems, Inc.



BBLZ-D-ST

See table for dimensions and installation tooling information

BBLZ-D-ST DIMENSIONS & INSTALLATION TOOLING INFORMATION

CATALOG NUMBER	COPPER CONDUCTOR SIZE	STUD HOLE SIZE	FIGURE DIMENSIONS (IN.)						INSTALLATION TOOLING				WIRE STRIP LENGTH
			STUD HOLE SPACING RANGE	TONGUE WIDTH "W"	TONGUE LENGTH "C"	TONGUE THICKNESS "T"	BARREL LENGTH "B"	OVERALL LENGTH "L"	COLOR CODE	PENN-UNION DIELESS MECHANICAL TOOLS	BURNDY DIE INDEX NO. /TOOL	PENN-UNION DIE CATALOG NO.	
BBLZ-8D-58-1ST14	8 AWG	1/4"	5/8" to 1"	.41	1.69	.08	.94	2.88	Red	TDM-250 or TDM-500	6	T-49	1-1/16"
BBLZ-8D-58-1ST38		3/8"	5/8" to 1"	.60	1.75	.06	.75	2.63					7/8"
BBLZ-6D-58-1ST14	6 AWG	1/4"	5/8" to 1"	.41	1.61	.09	1.13	2.96	Blue	TDM-250 or TDM-500	7	T-7	1-1/4"
BBLZ-6D-58-1ST38		3/8"	5/8" to 1"	.60	1.74	.06	1.00	2.87					1-1/8"
BBLZ-6D-1-175ST12	5 AWG	1/2"	1" to 1-3/4"	.70	2.77	.09	1.00	3.92	Blue	TDM-250 or TDM-500	7	T-7	1-1/4"
BBLZ-5D-58-1ST14		1/4"	5/8" to 1"	.44	1.61	.08	1.13	2.96					
BBLZ-5D-58-1ST38	4 AWG	3/8"	5/8" to 1"	.61	1.83	.07	1.13	3.21	Gray	TDM-250 or TDM-500	8	T-8	1-1/4"
BBLZ-4D-58-1ST14		1/4"	5/8" to 1"	.50	1.61	.09	1.13	2.96					
BBLZ-4D-58-1ST38	3 AWG	3/8"	5/8" to 1"	.61	1.81	.08	1.13	3.21	White	TDM-250 or TDM-500	9	T-9	1-1/4"
BBLZ-4D-1-175ST12		1/2"	1" to 1-3/4"	.92	3.00	.10	1.13	4.38					
BBLZ-3D-58-1ST14	2 AWG	1/4"	5/8" to 1"	.65	1.61	.20	1.13	2.96	Brown	TDM-250 or TDM-500	10	T-10	1-1/4"
BBLZ-3D-58-1ST38		3/8"	5/8" to 1"	.65	1.83	.20	1.13	3.21					1-3/8"
BBLZ-2D-58-1ST14	1 AWG	1/4"	5/8" to 1"	.59	1.61	.11	1.25	3.11	Green	TDM-250 or TDM-500	11	T-11	1-1/2"
BBLZ-2D-58-1ST38		3/8"	5/8" to 1"	.59	1.83	.11	1.25	3.36					1-5/16"
BBLZ-2D-1-175ST12	1/0 AWG	1/2"	1" to 1-3/4"	.81	3.00	.10	1.25	4.53	Pink	TDM-250 or TDM-500	12	T-12	1-1/2"
BBLZ-1D-58-1ST14		1/4"	5/8" to 1"	.67	1.83	.10	1.38	3.55					
BBLZ-1D-58-1ST38	2/0 AWG	3/8"	5/8" to 1"	.67	1.83	.10	1.38	3.55	Black	TDM-250 or TDM-500	13	T-13	1-5/8"
BBLZ-1D-1-175ST12		1/2"	1" to 1-3/4"	.70	2.77	.09	1.20	4.12					Y644HS
BBLZ-1/0D-58-1ST14	3/0 AWG	1/4"	5/8" to 1"	.74	1.83	.11	1.38	3.55	Orange	TDM-250 or TDM-500	14	T-14	1-1/2"
BBLZ-1/0D-1-175ST38		3/8"	1" to 1-3/4"	.74	2.58	.11	1.38	4.30					
BBLZ-1/0D-1-175ST12	4/0 AWG	1/2"	1" to 1-3/4"	.81	3.00	.10	1.38	4.63	Purple	TDM-250 or TDM-500	15	T-15	1-3/4"
BBLZ-2/0D-58-1ST14		1/4"	5/8" to 1"	.82	1.61	.12	1.50	3.42					
BBLZ-2/0D-1-175ST38	300 kcmil	3/8"	1" to 1-3/4"	.82	2.58	.12	1.50	4.39	Yellow	TDM-250 or TDM-500	16	T-16	1-5/8"
BBLZ-2/0D-1-175ST12		1/2"	1" to 1-3/4"	.82	3.00	.12	1.50	4.84					
BBLZ-3/0D-58-1ST14	350 kcmil	1/4"	5/8" to 1"	.89	1.61	.13	1.50	3.49	White	TDM-500	17	T-17	2-1/8"
BBLZ-3/0D-1-175ST38		3/8"	1" to 1-3/4"	.89	2.58	.13	1.50	4.46					
BBLZ-3/0D-1-175ST12	400 kcmil	1/2"	1" to 1-3/4"	.89	3.00	.13	1.50	4.91	Red	TDM-500	18	T-18	2-1/8"
BBLZ-4/0D-58-1ST14		1/4"	5/8" to 1"	1.00	1.61	.14	1.63	3.68					
BBLZ-4/0D-1-175ST38	500 kcmil	3/8"	1" to 1-3/4"	1.00	2.58	.14	1.63	4.68	Blue	TDM-500	19	T-19	2-1/4"
BBLZ-4/0D-1-175ST12		1/2"	1" to 1-3/4"	1.00	3.00	.14	1.63	5.10					
BBLZ-025D-58-1ST14	600 kcmil	1/4"	5/8" to 1"	1.09	1.61	.16	1.63	3.80	Green	TDM-500	20	T-20	2-3/8"
BBLZ-025D-1-175ST38		3/8"	1" to 1-3/4"	1.09	2.58	.16	1.63	4.77					
BBLZ-025D-1-175ST12	650 kcmil	1/2"	1" to 1-3/4"	1.09	3.00	.16	1.63	5.13	Pink	TDM-500	21	T-21	2-1/2"
BBLZ-030D-58-1ST14		1/4"	5/8" to 1"	1.19	1.61	.16	2.00	4.17					
BBLZ-030D-1-175ST38	750 kcmil	3/8"	1" to 1-3/4"	1.19	2.58	.16	2.00	5.14	Black	TDM-500	22	T-22	2-13/16"
BBLZ-030D-1-175ST12		1/2"	1" to 1-3/4"	1.19	3.00	.16	2.00	5.59					
BBLZ-035D-58-1ST14	800 kcmil	1/4"	5/8" to 1"	1.28	1.61	.17	2.00	4.24	Orange	TDM-500	23	T-23	3"
BBLZ-035D-1-175ST38		3/8"	1" to 1-3/4"	1.28	2.58	.17	2.00	5.21					
BBLZ-035D-1-175ST12	1000 kcmil	1/2"	1" to 1-3/4"	1.28	3.00	.17	2.00	5.66	White	TDM-500	24	T-24	3-1/8"
BBLZ-040D-58-1ST14		1/4"	5/8" to 1"	1.39	1.61	.19	2.13	4.37					
BBLZ-040D-1-175ST38	1500 kcmil	3/8"	1" to 1-3/4"	1.39	2.58	.19	2.13	5.34	Green	TDM-500	25	T-25P	3-1/16"
BBLZ-040D-1-175ST12		1/2"	1" to 1-3/4"	1.39	3.00	.19	2.13	5.79					
BBLZ-050D-58-1ST14	2000 kcmil	1/4"	5/8" to 1"	1.53	1.61	.21	2.25	4.61	Brown	TDM-500	26	T-26	3-1/2"
BBLZ-050D-1-175ST38		3/8"	1" to 1-3/4"	1.53	2.58	.21	2.25	5.58					
BBLZ-050D-1-175ST12	2500 kcmil	1/2"	1" to 1-3/4"	1.53	3.00	.21	2.25	6.03	Pink	TDM-500	27	T-27P	3-5/8"
BBLZ-060D-1-175ST38		3/8"	1" to 1-3/4"	1.72	2.58	.27	2.69	6.11					
BBLZ-060D-1-175ST12	3000 kcmil	1/2"	1" to 1-3/4"	1.72	3.00	.27	2.69	6.56	Black	TDM-500	28	T-28	3-7/8"
BBLZ-065D-1-175ST38		3/8"	1" to 1-3/4"	1.78	2.58	.27	2.81	6.23					
BBLZ-065D-1-175ST12	3500 kcmil	1/2"	1" to 1-3/4"	1.78	3.00	.27	2.81	6.68	White	TDM-500	29	T-29	3-1/2"
BBLZ-075D-1-175ST38		3/8"	1" to 1-3/4"	1.91	2.58	.27	2.88	6.40					
BBLZ-075D-1-175ST12	4000 kcmil	1/2"	1" to 1-3/4"	1.91	3.00	.27	2.88	6.85	Green	TDM-500	30	T-30	3-3/4"
BBLZ-080D-1-175ST12		1/2"	1" to 1-3/4"	1.97	3.00	.25	2.94	7.00					
BBLZ-100D-1-175ST38	4500 kcmil	3/8"	1" to 1-3/4"	2.17	2.58	.33	3.00	6.71	Brown	TDM-500	31	T-31P	3-5/8"
BBLZ-100D-1-175ST12		1/2"	1" to 1-3/4"	2.17	3.00	.33	3.00	7.16					
BBLZ-150D-1-175ST12	5000 kcmil	1/2"	1" to 1-3/4"	2.69	3.00	.39	3.19	7.44	Black	TDM-500	32	T-32	3-7/8"
BBLZ-200D-1-175ST12		1/2"	1" to 1-3/4"	3.08	3.00	.47	3.44	7.78					

• For 45° or 90° BENT TONGUES add suffix "-45" for 45 deg. or "-90" for 90 deg. to the catalog number

- Connectors from 8 AWG - 2000 kcmil are UL listed per UL486A-B and CSA certified per C22.2 No.65 for POWER applications
- Connectors from 8 AWG - 500 kcmil are UL listed for grounding, bonding and direct burial applications per UL467
- Connectors from 8 AWG - 250 kcmil are CSA certified for grounding, bonding and direct burial applications per C22.2 No.41